

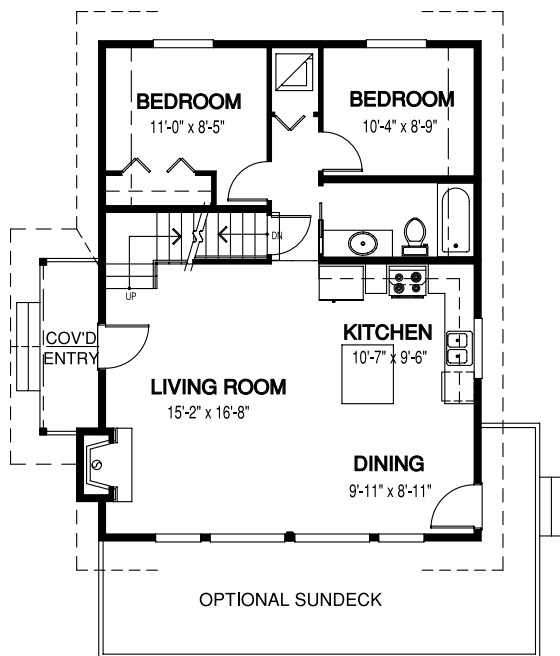
The Sebright

PLAN OF THE MONTH | January 2015

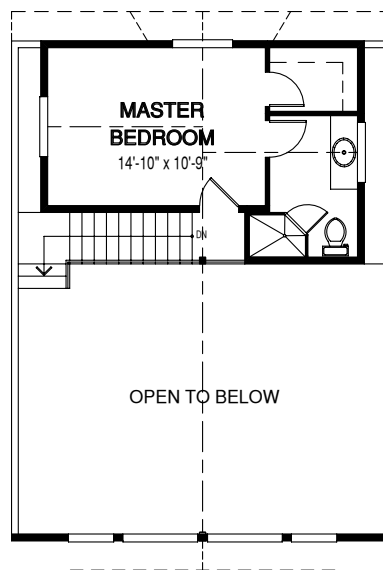


WIDTH: 30 ft. | DEPTH: 34 ft. | MAIN FLOOR: 884 sq. ft. | UPPER FLOOR: 298 sq. ft. | TOTAL AREA: 1182 sq. ft.

MAIN FLOOR



UPPER FLOOR



Designs, Images & Plans © Linwood Homes Ltd.



Just awarded the distinction of Finalist in the Canadian National SAM Awards, this Linwood home package or kit is ideal for building on a small lot. It is a wonderful retreat that makes a lasting impression as a cabin, cottage or chalet.

[Interested in this home package or kit? Click here to see more details.](#)



www.linwoodhomes.com

Contact your Linwood representative for a price, or call: U.S. & Canada: 1-888-546-9663